



Flextor

- > Patented innovation for the cold store/freezer world
- > Fast reliable logistic work flows
- > Reduces overheads
- > Combination of proven and innovative features
- > Door panel replacement on existing systems possible

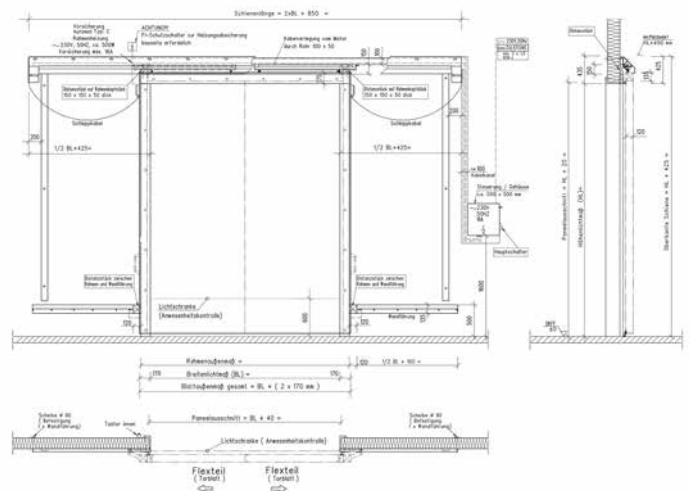




Flexibility guaranteed!

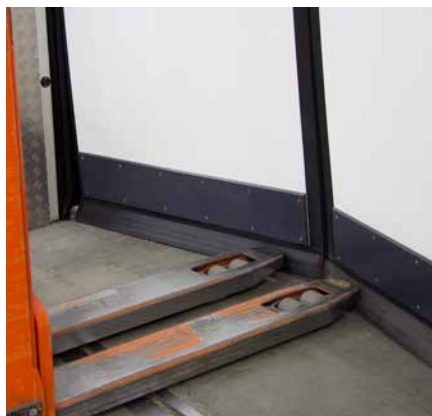
Doors are a crucial interface in the logistics and material flow sectors. No matter how well a door is installed, it must withstand the human factor as user with all his strengths and weaknesses during operation. So, despite all due care and high-speed door action, incidents occasionally occur with forklift trucks over the many thousands of cycles completed by a door every year. Impact damage inevitably disrupts the work flow.

Defective doors are a safety risk for both your merchandise and personnel. They not only reduce energy efficiency, but can also seriously hinder logistic work flows.





We offer a mature unique product of proven longstanding reliability and exceptional suitability for use.



The door panel gives way when accidentally intercepted by the forklift truck.

Better to bend than break

The design of the patented two-part cold store and freezer room door includes a flexible insulating core in the area of the door clearances. The door panel is equipped with a hygiene-friendly impact-resistant GRP surface finish and semi-

frame in stainless steel, with keeps the flex part in position via a tongue and groove profile. This patented design ensures highly efficient frame sealing with the flexible door panel.

Quality guaranteed!



Internal sliding Flextor for freezer rooms with flashing warning light and induction loop evaluation unit.



Easily accessible screw fittings for adjusting the door panels.



Set screw – side sealing for optimum tightness.



Pressure equalisation hatch for stabilising flexible doors panels.



Control unit (IP 65) for maintenance purposes at head height beside the door. Unit can be installed at right or left.



Side handle for manual door opening in case of power failure.



Side wall guide for door panel. Floor guide not necessary.



PE skirting protection – available in standard colours.

Technical information for cold store sliding door and Flextor freezer room sliding door

- Door panel:** Door thickness 120 mm, with semi-frame at rear and top in stainless steel rectangular tube for form stability, with upright PE cove profile for holding the flexible door, which can slide out in case of collision. Hygienic GRP surface, textured.
- Frame:** Sturdy flat plastic frame 150 x 50 mm mounted on sandwich wall.
- Size** Clear span up to max. 320 x 500 cm (WxH)
- Fitting/Guide:** Reliable opening/closing mechanism in the runner, which consists of an aluminium profile open only facing door panel.
- Automatic system:** Automatic safety systems with drive element and pushbutton, ready mounted and connected as ready-to-plug in. Speed slide version – opening at a rate of up to 2.1 m/sec.
- Options:** Internal sliding version (in freezer room) with induction loops, pressure equalisation hatch, single-wing version.

Replacement/Change of existing systems

As technology moves forward, we can help you to improve your existing systems. You safeguard your investment by ensuring that systems comply with current requirements and regulations and will work optimally for many years to come.

The innovative Flextor offers unique benefits:

Rugged design, in most cases the flexible doors withstand bumps and contact with the forklift truck without permanent damage. Investing in Flextor soon pays off thanks to reliability of operations and reduced subsequent costs of any damage.

A high turnaround of goods is a special feature of warehouses and logistics enterprises. In contrast to doors that lift up, the entire headroom is immediately available. Door opening time is halved by the two-part door panel and a total opening speed of up to 2.1 m per second achieved. Another high-speed door is generally unnecessary.

The electric heating is focused on the door seal, with a positive impact on the door's energy balance. Door joints or sections need not be heated as commonly the case for conventionally insulated sectional doors.

We will be happy to advise you if you wish to replace or retrofit your existing rigid doors with the new flexible system. Our service engineers or planners can check whether the basic construction (depending on manufacturer) can be retained and system adaptation is feasible.

Reliability guaranteed!

Your benefits with Plattenhardt + Wirth:

- Personal expert advice on your project
- Our own experienced planners in our engineering office
- Our own qualified fitters
- Your own personal advisor from the planning stage to handover
- Guaranteed **after sales service**
- Security based on 50 years of specialist experience in the industry.

From the first we have focused on forging fair long-standing partnerships with our esteemed customers, and will continue to do so, now and in the future.

And we can do this by impressing you with our services and conduct in the long term. And we do our utmost to do so, with each new day.

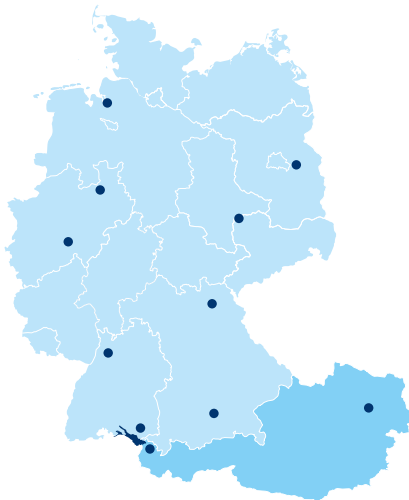
A powerful freshness partner for your branch

Plattenhardt + Wirth has specialised in cold room construction since **1965** and is now Europe's leading company in this field. We are headquartered in Meckenbeuren on the shores of beautiful Lake Constance.

Our long-standing experience, in-house construction and assembly departments provide our customers with a substantial value-added: swift processing, seamless building supervision, and ongoing partner support throughout the project guaranteed to give you sustained peace of mind.

Take advantage of our extensive expertise and consult us about your individual projects. We will find the right cold room solution for you.

For more details visit www.plawi.de.



Contact

Headquarters

Plattenhardt + Wirth GmbH
Nelkenstraße 11
D-88074 Meckenbeuren-Reute
Tel.: +49 (0)7542 - 9429 - 0
Fax: +49 (0)7542 - 9429 - 36
E-Mail: info@plawi.de

Branch offices Germany

D-57482 Wenden
Otto-Hahn-Straße 3
E-Mail: info.wenden@plawi.de

D-95444 Bayreuth
Nibelungenstraße 32
E-Mail: info.bayreuth@plawi.de

D-06188 Landsberg
Brehnaer Straße 1
E-Mail: info.landsberg@plawi.de

D-27572 Bremerhaven
Eiswerkestraße 8
E-Mail: info.bremerhaven@plawi.de

References Flextor:



Branch offices Austria

Plattenhardt + Wirth Österreich GmbH
Hohe Brücke 5
A-3124 Unterwölbling
Tel.: +43 2786 - 20298-0
Fax: +43 2786 - 20298 - 89
E-Mail: info@plawi.at

A-6812 Meiningen
Schweizerstrasse 25
E-Mail: info@plawi.at

D-82024 Taufkirchen
Mehlbeerenstraße 2
E-Mail: info.muenchen@plawi.de

D-68766 Hockenheim
2. Industriestr. 7
Email: info.hockenheim@plawi.de

D-33604 Bielefeld
Otto-Brenner-Str. 247
E-Mail: info.bielefeld@plawi.de

D-15562 Rüdersdorf
Altlandsberger Straße 3
E-Mail: info.ruedersdorf@plawi.de

