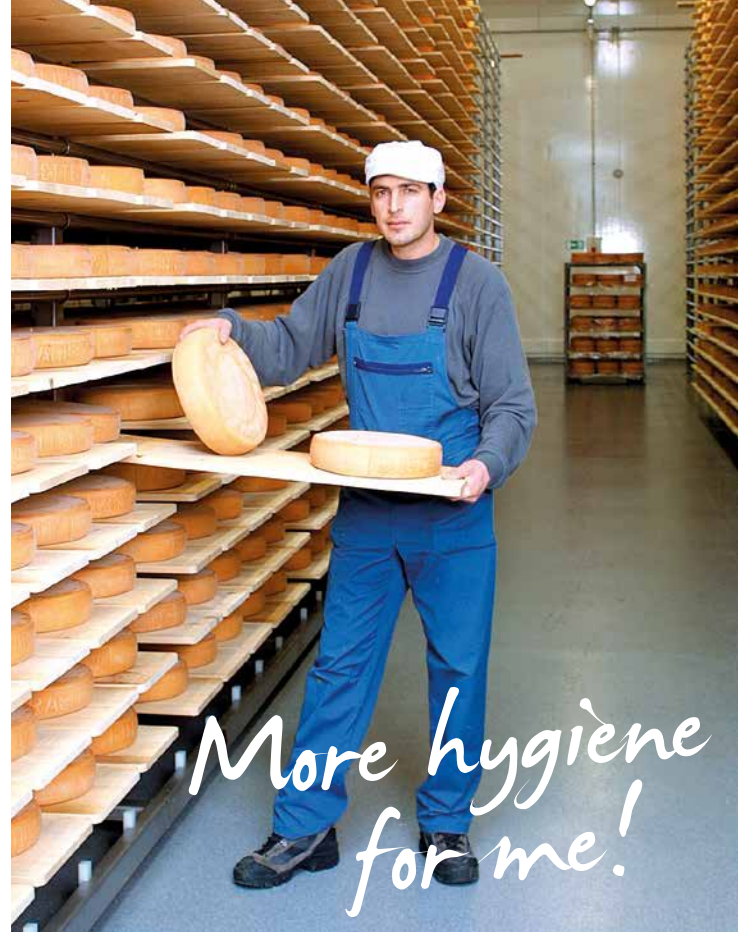




Seamless GRP insulations

- > EasyClean-Pan®
- > Glasbord®
- > Hygiene-Plus®
- > H-profile system



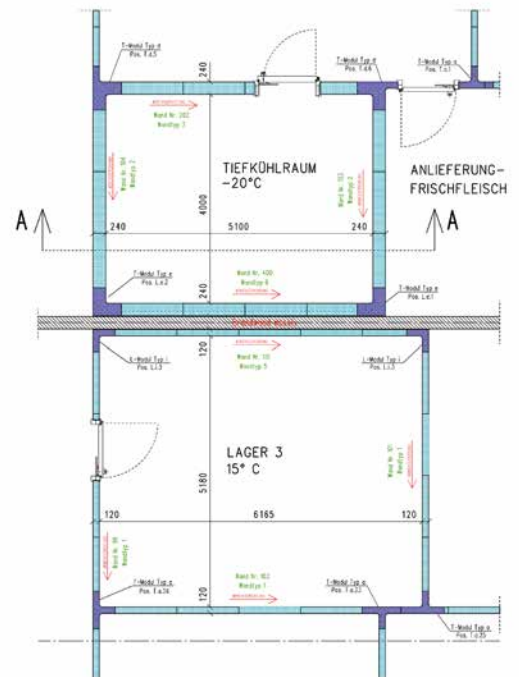


More hygiene for me!

Safety – guaranteed!

Rooms for food processing are subject to extremely stringent hygiene regulations. Ceilings and walls must permanently withstand extreme loads such as fluctuating temperatures, high humidity levels, mould, lactic acids, salts and greases as well as aggressive detergents and disinfectants. Use of the correct insulating panels is crucial in these cases. GRP insulating elements are both visually and hygienically perfect and proven for use in refrigeration rooms and company premises at dairies and cheese makers, slaughterhouses, sausage, meat, fish and vegetable processing plants. They comply with the EU directives for the food industry and food trade.

We plan your project individually according to your requirements. Our own specialist fitters implement the warehouse solution planned by us and agreed with you to ensure an on-time delivery.



Quality – guaranteed!

We use only materials of durable, robust quality right down to the last detail and deliberately avoid additional, high-maintenance elements. This basic principle stems from decades of experience and has made us one of the market leaders in Europe.

Cost-effectiveness and safety for your product:

- A high degree of pre-production enables fast installation
- Minimisation of the amount of joints
- Resistant to humidity and corrosion-proof
- Easy repair of damage

Individual production according to your requirements:

- Concealed attachment
- Recessed switches and lights possible
- Invisible routing of cables inside the wall
- Flush glazing
- Individual production of your door and gate systems



Lead-throughs and connections can be cleanly adapted. Thanks to this system, all corners and sharp cut edges are non-corrodible. An important advantage over steel sandwich elements.



Floor joint with hollow groove and permanently elastic joint as a transition to the wall system. Easy to clean, simply good.



Thanks to the pre-fabricated rounded corners, cleaning work is made easier or faster and therefore costs are saved. Clean detailed connections meet all requirements of the hygiene regulations.



The switch is perfectly let into the panel, so that ideal basic conditions of all hygiene regulations are met here. The appearance of the recessed buttons is also very notable.



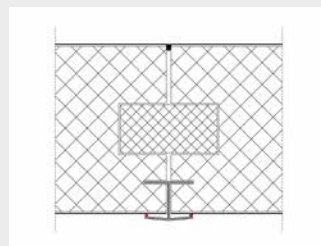
Precise planning and installation of V2A lift gates.

Technical specifications

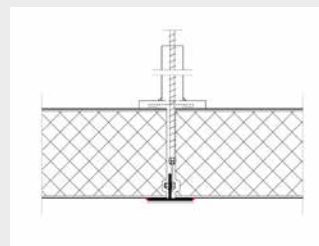
Surfaces	GRP (glass-reinforced plastic resin), 1.0 – 2.3 mm optional: fabric-reinforced, gelcoat finish Glasbord® 2.3 – 6.1 mm thick with Surfaseal® finish Zinc-coated and polyester-coated backings available
Properties	Easy to clean surface, resistant to mechanical and chemical loads, corrosion-free, impact-resistant, abrasion-resistant, colour-fast
Insulation thicknesses	20 – 240 mm, heat transfer coefficient 0.098 – 1.408 W/m ² ·K
Insulation material core	Hard polystyrene foam EPS, thermal conductivity WLG 040 or WLG 035 Other insulating materials are available.
Fire tests	D D B2 as per DIN 4102 – normal flammability, E as per DIN EN ISO 11 925-2 A B2 as per ÖNORM B 3800, part 1 (Austrian norm) CH Fire Index 5.1 for Insulating Material EPS as per Kantonale Feuerversicherung (Swiss norm)
Joints	Special joint with hard surface and certificate or H-profile system
Rounded corners	Pre-fabricated insulating elements or special moulded plastic profiles
Connections	Tongue and groove system without thermal bridges
Dimensions	Overall width 1,000 – 1,200 mm



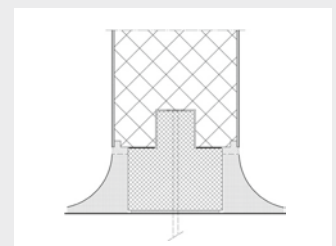
Pre-fabricated, rounded inside corner profile



System cut „hard joint“ and H-profile system



Thermal bridge-free, completely hygienic ceiling suspension



Flush to the wall floor joint with hollow groove

Selection of the insulation thicknesses on the basis of the room usage

Use	Temperature range	Insulation core
Company rooms	ca. +5 bis +25°C	0 – 120 mm
Refrigeration rooms	ca. +1 bis +15°C	100 – 140 mm
Freezer rooms	ca. -1 bis -50°C	160 – 240 mm

Professionalism – guaranteed!

Depending on specifications, the GRP insulating elements can be supplied in various versions: As ceiling and wall claddings, as partition walls or as accessible suspended ceilings. The panels are available as an innovative seamless system with a certified, food-safe two-component gap-filled joint or as a proven H-profile system. Both systems can be installed quickly, easily and economically.

As the company has its own planning department, on-time implementation of projects is ensured. GRP components as well as doors and gates are planned according to the progress of the installation work. Our own specialist fitters guarantee professional installation. Benefit from our many years of experience and expert advice.



Hygiene airlock clean/unclean



Flush door frame installation



GRP elements with rounded inner corner and GRP impact protection



PE swing door with flush window

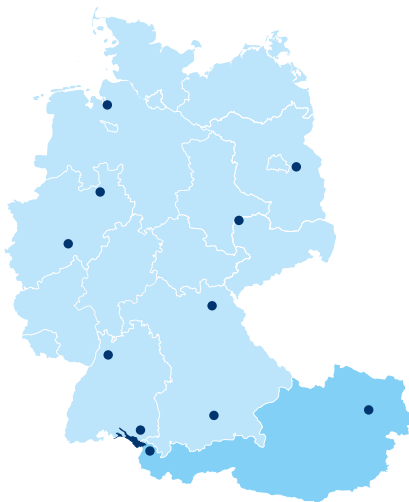
Efficient specialists providing “freshness” for your industry

Plattenhardt + Wirth has specialised in cold room construction since **1965** and is now Europe's leading company in this field. We are headquartered in Meckenbeuren on the shores of beautiful Lake Constance.

Our long-standing experience, in-house construction and assembly departments provide our customers with a substantial value-added: swift processing, seamless building supervision, and ongoing partner support throughout the project guaranteed to give you sustained peace of mind.

Take advantage of our extensive expertise and consult us about your individual projects. We will find the right cold room solution for you.

For more details visit www.plawi.de.



Contact

Headquarters

Plattenhardt + Wirth GmbH
Nelkenstraße 11
D-88074 Meckenbeuren-Reute
Tel.: +49 (0)7542 - 9429 - 0
Fax: +49 (0)7542 - 9429 - 36
E-Mail: info@plawi.de

Branch offices Germany

D-57482 Wenden
Otto-Hahn-Straße 3
E-Mail: info.wenden@plawi.de

D-95444 Bayreuth
Nibelungenstraße 32
E-Mail: info.bayreuth@plawi.de

D-06188 Landsberg
Brehnaer Straße 1
E-Mail: info.landsberg@plawi.de

D-27572 Bremerhaven
Eiswerkestraße 8
E-Mail: info.bremerhaven@plawi.de

References



D-82024 Taufkirchen
Mehlbeerenstraße 2
E-Mail: info.muenchen@plawi.de

D-68766 Hockenheim
2. Industriestr. 7
Email: info.hockenheim@plawi.de

D-33604 Bielefeld
Otto-Brenner-Str. 247
E-Mail: info.bielefeld@plawi.de

D-15562 Rüdersdorf
Altlandsberger Straße 3
E-Mail: info.ruedersdorf@plawi.de

Branch offices Austria

Plattenhardt + Wirth Österreich GmbH
Hohe Brücke 5
A-3124 Unterwölbling
Tel.: +43 2786 - 20298-0
Fax: +43 2786 - 20298 - 89
E-Mail: info@plawi.at

A-6812 Meiningen
Schweizerstrasse 25
E-Mail: info@plawi.at

