



## CA and ULO Long-Term Storage

- > Cutting-edge insulation technology
- > Reliable room sealing
- > Tested gate systems



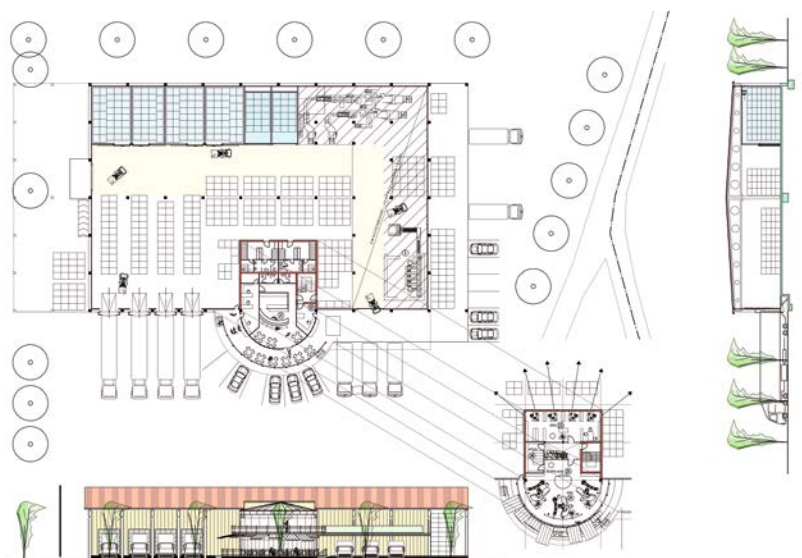


*Added safety!*

## Safety – guaranteed!

Only optimal storage of fruit and vegetables, with absolutely consistently low oxygen and carbon dioxide values, guarantees that you can offer flawless and fresh goods even after months of storage. PLAWI ULO doors function according to the tested principle of static pressure force and thus guarantee the greatest safety for the storage of your fruit.

We plan your CA/ULO long-term storage facility, dispatch area and your sorting rooms individually and according to your requests. The storage solutions that we plan in cooperation with you are executed by our own assemblers reliably and on schedule.



# Quality – guaranteed!

We place the greatest value on durable and sturdy quality down to the last detail, and consciously do not adopt maintenance-prone elements in our designs.

## Input of Expertise and Reliable Materials:

- best insulation materials with surfaces of coil-coated steel plating, GFRP, stainless steel, etc.
- hygienic complete solutions in compliance with the latest EU directives

## Individual Production of Your Access and Door Systems:

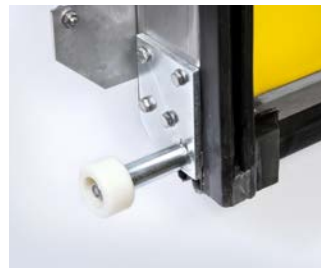
- cold room sliding doors (also available as gastight model)
- cold room pivot doors
- lift doors as single panel system available as gastight model
- energy efficient high-speed doors
- surfaces of rigid PVC foil, aluminium, stainless steel, coil-coated steel plating or GFRP



ULO compression seals with vulcanised corners. No additional compression necessary, e.g. inflation seal.



Solid, aluminium-coated fixed frame. Absolutely gastight, corrosion-resistant and thoroughly hygienic due to welded corners and seams.



Track roller of a lift door. Low-maintenance and reliable.



Unique compression system – simple, innovative and extremely effective. With 1-handle system for reliably uniform pressure forces up to 1.5 tonnes.



Protective entry chain for highest safety against unauthorised entry, in compliance with UVV (German accident prevention regulation).



Integrated gastight ULO window. Custom built with key lock and 1-handle system for emergency escape. Pivot fitting with 10-point locking mechanism.

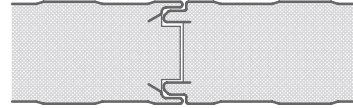


Frequency controlled door drive for material-friendly and quick opening. No safety contact strips required. Complies with current DIN and EN standards.

# Technical Data on CA and ULO Long-Term Storage

## Quick-build Insulation Panel Type P

- quick and easy installation
- insulation thicknesses 45, 60, 80, 100, 120, 140, 170, 200 mm



<b>Insulation Core</b>	polyurethane rigid foam, FCKW and HFCKW-free, density approx. 40 kg/m <sup>3</sup>
<b>Fire Tests</b>	D B1 in compliance with DIN 4102 – flame retardant CH Class 5.3 acc. to VKF Bern (Swiss fire regulations) FM Approval (4880, 4881, 4882, 4471)
<b>Certification</b>	General site supervisory / building law certification for the use as external facade

Panel Type		Unit	P45-St	P60-St	P80-St	P100-St	P120-St	P140-St	P170-St	P200-St	P220-St
Panel Thickness	d	mm	45	60	80	100	120	140	170	200	220
Panel Weight approx		kg/m <sup>2</sup>	11,1	11,7	12,5	13,3	14,1	14,9	16,1	17,3	18,1
U-Value	U	W/m <sup>2</sup> ·K	0,540	0,388	0,285	0,266	0,187	0,160	0,131	0,111	0,101

# Technical Information on Gastight Doors and Windows

<b>Door Panels</b>	Panel thickness 100 mm, coil-coated steel outer casing filled with high-resistance polyurethane foam, U-value of up to 0.231 W/m <sup>2</sup> ·K.
<b>Colours</b>	Standard colours: PLAWI yellow, RAL 9002 (grey-white), custom colours on request (at extra cost).
<b>Sealing System</b>	Solid PLAWI single-handle sealing device, pressure force up to 1.5 tonnes, can be locked to prevent unauthorised opening. Special double seal with vulcanised corners for constant gas tightness.
<b>Door Frames</b>	Solid, gastight welded aluminium frame with special filling for permanent torsion rigidity.
<b>Windows</b>	Gastight synthetic pivot windows, gas filled insulation glass, U-value = 1.1 W/m <sup>2</sup> ·K, can be locked externally on the handle, inside escape fitting in compliance with accident prevention regulations, always able to be opened from the inside.
<b>Mounting</b>	Galvanised, robust device and track rollers with ball-bearings for smooth-running and low-noise operation of the door panel.
<b>Operation</b>	Manual operation; electrical operation on request (at extra cost).
<b>Options</b>	Threshold, inside track model, device cover, lift door, lockable.

## Reliability – guaranteed!

We have an interesting selection of ULO sliding doors and lift gates in various models available for you. Your individual requirements are the determining factor. The non-warping, extremely stable door panels are specially manufactured, homogeneously sealed and are filled with PU foam. The door is sealed gastight (ULO closure left and right) with a single-handed operation.

The in-house door production enables an optimal, on-schedule project execution. Frames and door panels are dispatched to correspond with assembly progress. The assembly will be carried out by our own specialised assemblers.



PLAWI Standard Lift Gate with manual operation



PLAWI Euro Sliding Doors with inside track



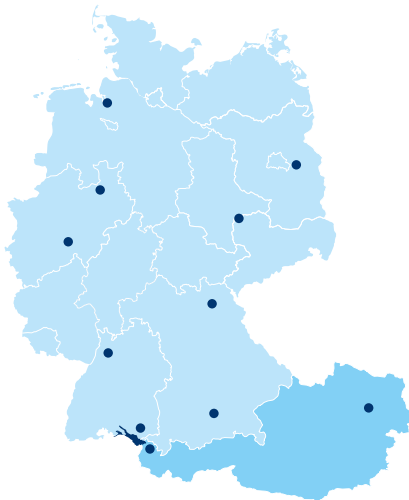
# Powerful Freshness Partner for Every Industry

Plattenhardt + Wirth has specialised in cold room construction since **1965** and is now Europe's leading company in this field. We are headquartered in Meckenbeuren on the shores of beautiful Lake Constance.

Our long-standing experience, in-house construction and assembly departments provide our customers with a substantial value-added: swift processing, seamless building supervision, and ongoing partner support throughout the project guaranteed to give you sustained peace of mind.

Take advantage of our extensive expertise and consult us about your individual projects. We will find the right cold room solution for you.

For more details visit [www.plawi.de](http://www.plawi.de).



## Contact

### Headquarters

Plattenhardt + Wirth GmbH  
Nelkenstraße 11  
D-88074 Meckenbeuren-Reute  
Tel.: +49 (0)7542 - 9429 - 0  
Fax: +49 (0)7542 - 9429 - 36  
E-Mail: [info@plawi.de](mailto:info@plawi.de)

### Branch offices Germany

D-57482 Wenden  
Otto-Hahn-Straße 3  
E-Mail: [info.wenden@plawi.de](mailto:info.wenden@plawi.de)

D-95444 Bayreuth  
Nibelungenstraße 32  
E-Mail: [info.bayreuth@plawi.de](mailto:info.bayreuth@plawi.de)

D-06188 Landsberg  
Brehnaer Straße 1  
E-Mail: [info.landsberg@plawi.de](mailto:info.landsberg@plawi.de)

D-27572 Bremerhaven  
Eiswerkestraße 8  
E-Mail: [info.bremerhaven@plawi.de](mailto:info.bremerhaven@plawi.de)

## References



D-82024 Taufkirchen  
Mehlbeerenstraße 2  
E-Mail: [info.muenchen@plawi.de](mailto:info.muenchen@plawi.de)

D-68766 Hockenheim  
2. Industriestr. 7  
Email: [info.hockenheim@plawi.de](mailto:info.hockenheim@plawi.de)

D-33604 Bielefeld  
Otto-Brenner-Str. 247  
E-Mail: [info.bielefeld@plawi.de](mailto:info.bielefeld@plawi.de)

D-15562 Rüdersdorf  
Altlandsberger Straße 3  
E-Mail: [info.ruedersdorf@plawi.de](mailto:info.ruedersdorf@plawi.de)

### Branch offices Austria

Plattenhardt + Wirth Österreich GmbH  
Hohe Brücke 5  
A-3124 Unterwölbling  
Tel.: +43 2786 - 20298-0  
Fax: +43 2786 - 20298 - 89  
E-Mail: [info@plawi.at](mailto:info@plawi.at)

A-6812 Meiningen  
Schweizerstrasse 25  
E-Mail: [info@plawi.at](mailto:info@plawi.at)

