



Production rooms, cold/deep-freeze storage rooms

- > Hygienic complete solutions
- > High-quality insulation technology
- > Energy optimisation
- > Innovative door systems



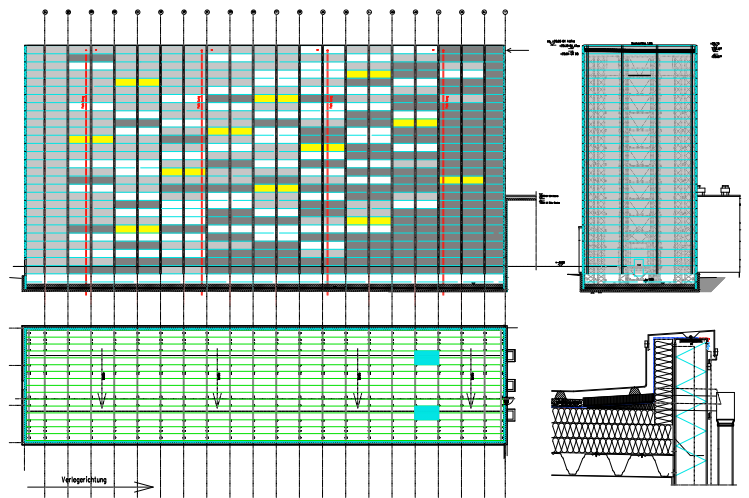
Cold rooms and production rooms



“Freshness” – guaranteed!

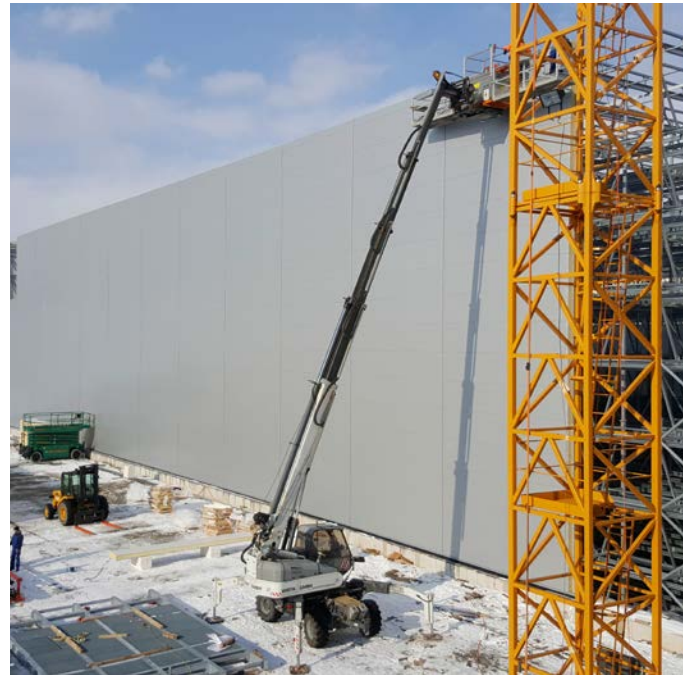
With high quality and environmentally friendly, CFC-free components we create perfect conditions for the secure and hygienic storage of food and other products. For many years we have been working with reliable partners in the construction of production rooms and cold storage facilities with our state-to-the-art technology.

This is how we create ideal room solutions for secure processing and storage of meat, dairy products, poultry, fish, fruit and vegetables, but also for beer, flowers, medications and many more applications.



Plattenhardt + Wirth plan and realise your projects across Germany, throughout Europe and worldwide:

- Pass-through cooling facilities
- Hygienic production rooms
- CA and ULO long-term storage
- Deep-freeze storage
- Rapid cooling



Competence – guaranteed!

What we can offer you:

- The best insulation materials with special surfaces such as GRP, stainless steel etc.
- Hygienic complete solutions according to the latest EU regulations
- High room density
- Reliable all-round service from advising via planning through to completion

We can meet your individual requirements and the corresponding construction conditions perfectly with our various access and door systems also coming from our own production.

- Cold room sliding doors (also available as gas-tight model)
- Cold room pivot doors
- Lift doors as single panel system (also available as gas-tight model)
- Energy saving high-speed doors
- From a food-physiological viewpoint, all doors and gates are provided with absolutely harmless surfaces



Freezer rooms

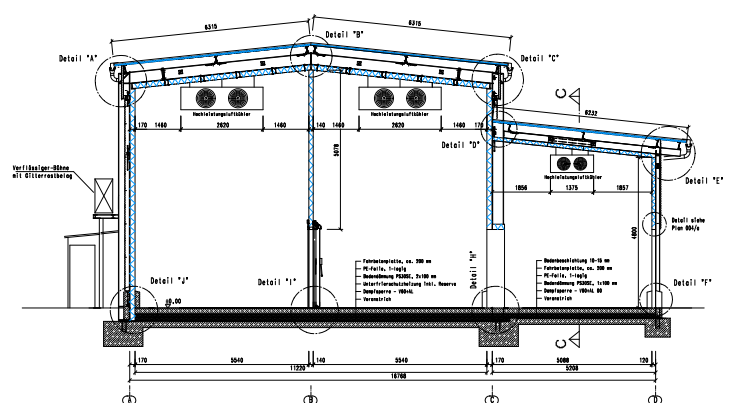


Security – guaranteed!

Freezer rooms and flash-freeze rooms require a high degree of planning in order to be effectively realised. On the basis of our competence and many years of experience we are capable of providing individual and custom built deep-freeze facilities and deep-freeze logistic centres that provide the highest security and cost effectiveness. Not only do we consider your specific requirements in our planning process, but also security features and equipment according to the UVV (German Accident Prevention Guidelines).

Flash-freeze rooms are suitable for all kinds of food such as meat, fish, poultry, fruit, vegetables, instant meals and many other applications.

Schnitt A-A



Performance – guaranteed!

We produce highly efficient and energy saving deep-freeze facilities based upon modern modular construction systems for walls and ceilings. We can incorporate your specific requirements for any floor foundations, for example: The following can be included in any design as required: waterproof sealing, insulation and frost protection, concrete surface with under floor heating and floor covering.



PLAWI-Flextor

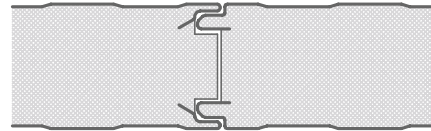


Heated floor area and adjacent mating door seal

Technical specifications:

Fast construction insulating panels type P

- Fast and easy assembly
- Panel thickness 45, 60, 80, 100, 120, 140, 170, 200, 220 mm



Insulation core

Solid Polyurethane foam, CFC and HCFC-free, density approx. 40 kg/m³

Fire tests

D B1 as per DIN 4102 - flame retardant, EURO-Class B-s2, d0 (German norm)
 CH Class 5.3 acc. to VKF Bern (Swiss norm)
 FM Approval (4880, 4881, 4882, 4471)

Approval

Our exterior facades meet the regulations of the German building inspection authority and building law

Panel Type		Unit	P45-St	P60-St	P80-St	P100-St	P120-St	P140-St	P170-St	P200-St	P220-St
Panel Thickness	d	mm	45	60	80	100	120	140	170	200	220
Panel Weight approx		kg/m ²	11,1	11,7	12,5	13,3	14,1	14,9	16,1	17,3	18,1
U-Value	U	W/m ² ·K	0,540	0,388	0,285	0,266	0,187	0,160	0,131	0,111	0,101

Your benefits with Plattenhardt + Wirth:

- Personal and competent service for your project
- Specialist planners in our technical office
- Our own specialist installation team
- You will have a single point of contact from the start of the project until its successful completion
- After sales service guaranteed
- Security due to 45 years of specific expertise.

It has always been our goal and it will always remain so that we will work with you – our valued customer – in a mutually beneficial long term partnership.

This is only possible if we can convince you by our performance and our behaviour on an on-going basis. These are our “Values” and we will apply them each and every day.



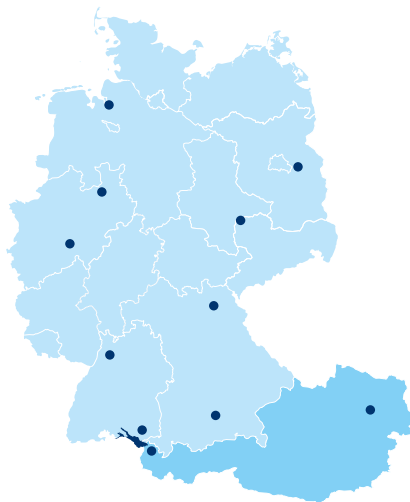
Your best choice partner for cool rooms and hygienic facilities

Plattenhardt + Wirth has specialised in cold room construction since **1965** and is now Europe's leading company in this field. We are headquartered in Meckenbeuren on the shores of beautiful Lake Constance.

Our long-standing experience, in-house construction and assembly departments provide our customers with a substantial value-added: swift processing, seamless building supervision, and ongoing partner support throughout the project guaranteed to give you sustained peace of mind.

Take advantage of our extensive expertise and consult us about your individual projects. We will find the right cold room solution for you.

For more details visit www.plawi.de.



Contact

Headquarters

Plattenhardt + Wirth GmbH
Nelkenstraße 11
D-88074 Meckenbeuren-Reute
Tel.: +49 (0)7542 - 9429 - 0
Fax: +49 (0)7542 - 9429 - 36
E-Mail: info@plawi.de

Branch offices Germany

D-57482 Wenden
Otto-Hahn-Straße 3
E-Mail: info.wenden@plawi.de

D-95444 Bayreuth
Nibelungenstraße 32
E-Mail: info.bayreuth@plawi.de

D-06188 Landsberg
Brehnaer Straße 1
E-Mail: info.landsberg@plawi.de

D-27572 Bremerhaven
Eiswerkestraße 8
E-Mail: info.bremerhaven@plawi.de

References



Branch offices Austria

Plattenhardt + Wirth Österreich GmbH
Hohe Brücke 5
A-3124 Unterwöbling
Tel.: +43 2786 - 20298-0
Fax: +43 2786 - 20298 - 89
E-Mail: info@plawi.at

A-6812 Meiningen
Schweizerstrasse 25
E-Mail: info@plawi.at

D-15562 Rüdersdorf
Altlandsberger Straße 3
E-Mail: info.ruedersdorf@plawi.de

